

BUCHAS DE ESFERAS - SUPER, AUTO-ALINHÁVEL / AJUSTÁVEL

ALTA CAPACIDADE DE CARGA (3x convencional)
VIDA ÚTIL MAIOR

Por ser auto alinhável:
Requer 2 rolamentos em, pelo menos, 1 dos eixos.

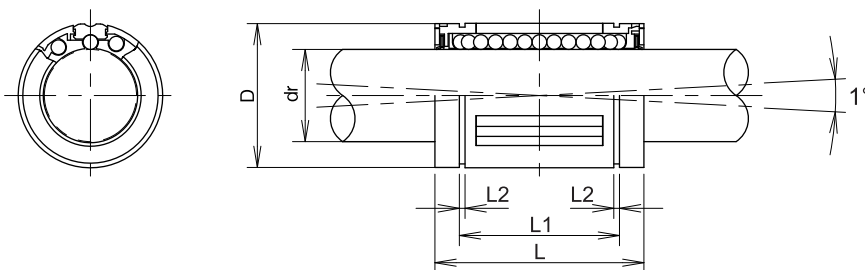
MOVIMENTAÇÃO EXTREMAMENTE SUAVE



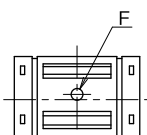
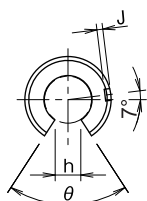
LMES...UU



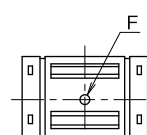
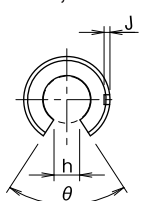
LMES...UUOP



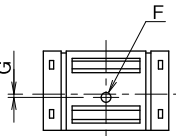
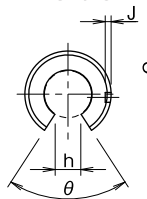
LMES12-OP



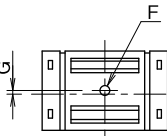
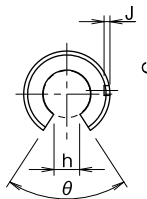
LMES16-OP, LMES20-OP



LMES25-OP



LMES30-OP, LMES40-OP, LMES50-OP



MODELO STANDARD	N° de circuitos	Massa (g)	dr		D	L		L1		L2	Capacidade Carga	
			Tolerância (µm)			Tolerância (mm)		Tolerância (mm)			Dinâmica C (N)	Estática Co (N)
LMES 10UU	5	17	10	+ 8	19	29	± 0.2	21.7	± 0.2	1.35	750	550
LMES 12UU	5	23	12	0	22	32		22.7		1.35	1230	1100
LMES 16UU	5	28	16	+ 9	26	36		24.7		1.35	1550	1250
LMES 20UU	6	61	20	1	32	45		31.3		1.65	2580	1670
LMES 25UU	6	122	25	+ 11	40	58		43.8		1.90	3800	2750
LMES 30UU	6	185	30	1	47	68		51.8		1.90	4710	2800
LMES 40UU	6	360	40	+ 13	62	80	60.4	2.20	6500	5720		
LMES 50UU	6	580	50	2	75	100	77.4	2.70	11460	7940		

MODELO STANDARD	N° de circuitos	Massa (g)	dr	D	L			F	G	J	Capacidade Carga			
					Tolerância (mm)	L2	h				θ	Dinâmica C (N)	Estática Co (N)	
LMES 12UUOP	4	18	12	22	32	± 0.2	1.35	6.5	66°	3.0	-	0.7	1290	1260
LMES 16UUOP	4	22	16	26	36		1.35	9	68°		-	0.7	1640	1320
LMES 20UUOP	5	51	20	32	45		1.65	9	55°		-	0.9	2630	1720
LMES 25UUOP	5	102	25	40	58		1.90	11.5	57°		1.5	1.4	3910	2850
LMES 30UUOP	5	155	30	47	68		1.90	14	57°		2.0	2.2	4850	2900
LMES 40UUOP	5	300	40	62	80		2.20	19.5	56°		1.5	2.3	6700	5900
LMES 50UUOP	5	480	50	75	100	2.70	22.5	54°	2.5	2.7	11700	8100		

